

# Technical data sheet

## Product features



### Freezing cabinet 700 l LED light, GN 2/1, stainless steel

<b>Model</b>	<b>SAP Code</b>	00012353
ENF 700 L	<b>A group of articles - web</b>	Refrigeration and freezer cabinets



- GN / EN size in device: GN 2/1
- Chamber volume [l]: 458
- Minimum device temperature [°C]: -24
- Maximum device temperature [°C]: -10
- Insulation thickness [mm]: 90
- Control type: Digital
- Interior lighting: Yes
- Door lock: Yes
- Automatic defrost: Yes
- HACCP: Yes
- Annual energy consumption [kWh]: 2436

<b>SAP Code</b>	00012353	<b>Gross Volume [m3]</b>	1.445
<b>Net Width [mm]</b>	847	<b>Net Volume [m3]</b>	1.298
<b>Net Depth [mm]</b>	733	<b>Number of GN / EN</b>	24
<b>Net Height [mm]</b>	2090	<b>GN / EN size in device</b>	GN 2/1
<b>Net Weight [kg]</b>	118.00	<b>Minimum device temperature [°C]</b>	-24
<b>Power electric [kW]</b>	0.526	<b>Maximum device temperature [°C]</b>	-10
<b>Loading</b>	230 V / 1N - 50 Hz	<b>Refrigerant</b>	R290
<b>Energy class</b>	C	<b>Climate class</b>	5
<b>Chamber volume [l]</b>	458		

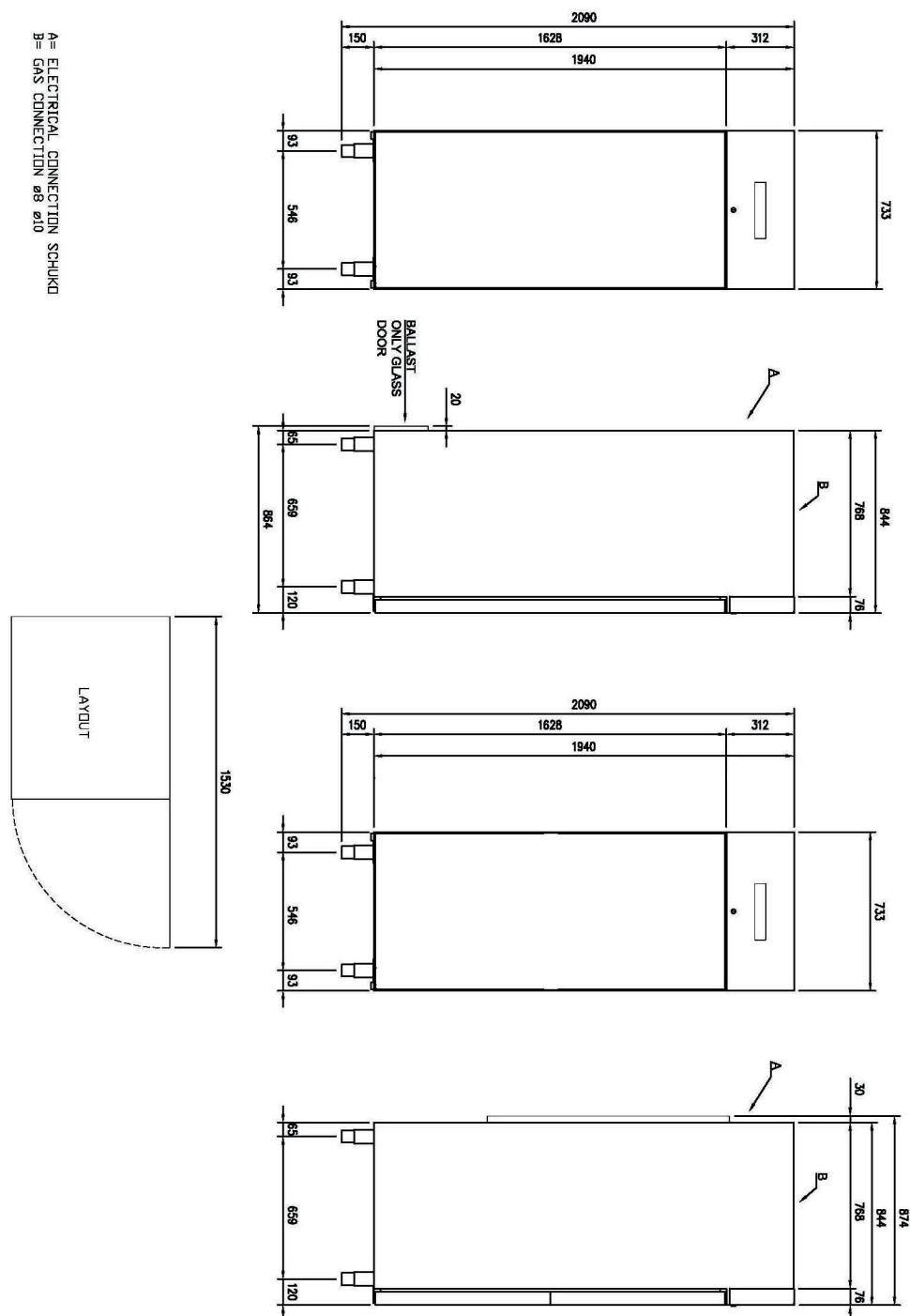
# Technical data sheet

Technical drawing



## Freezing cabinet 700 l LED light, GN 2/1, stainless steel

<b>Model</b>	<b>SAP Code</b>	00012353
ENF 700 L	<b>A group of articles - web</b>	Refrigeration and freezer cabinets



# Technical data sheet

## Product benefits



### Freezing cabinet 700 l LED light, GN 2/1, stainless steel

<b>Model</b>	<b>SAP Code</b>	00012353
ENF 700 L	<b>A group of articles - web</b>	Refrigeration and freezer cabinets

1

#### Insulation 90mm

- minimal losses
- energy saving

2

#### Two-sided opening

- location variability
- greater operational efficiency
- better kitchen ergonomics

3

#### All-stainless design

- corrosion resistance
- longer service life
- health safety

4

#### Automatic defrosting

- nothing needs to be watched
- always working properly without extra operator requirements

5

#### Wheels, legs

- variability
- user comfort

6

#### High energy class

- minimal energy loss
- high efficiency
- guaranteed chilled food
- cost saving
- hygienic safety

# Technical data sheet

Technical parameters



## Freezing cabinet 700 l LED light, GN 2/1, stainless steel

<b>Model</b>	<b>SAP Code</b>	00012353
ENF 700 L	<b>A group of articles - web</b>	Refrigeration and freezer cabinets

**1. SAP Code:**

00012353

**2. Net Width [mm]:**

847

**3. Net Depth [mm]:**

733

**4. Net Height [mm]:**

2090

**5. Net Weight [kg]:**

118.00

**6. Gross Width [mm]:**

763

**7. Gross depth [mm]:**

873

**8. Gross Height [mm]:**

2170

**9. Gross Weight [kg]:**

130.43

**10. Device type:**

Electric unit

**11. Power electric [kW]:**

0.526

**12. Loading:**

230 V / 1N - 50 Hz

**13. Energy class:**

C

**14. Refrigerant:**

R290

**15. Material:**

AISI 304

**16. Exterior color of the device:**

Stainless steel

**17. Max ambient temperature [°C]:**

40

**18. Device properties 2:**

Freezing

**19. GN / EN size in device:**

GN 2/1

**20. Number of GN / EN:**

24

**21. Chamber volume [l]:**

458

**22. Gross Volume [m3]:**

1.445

**23. Net Volume [m3]:**

1.298

**24. Adjustable feet:**

Yes

**25. Insulation thickness [mm]:**

90

**26. Number of doors:**

1

**27. Unit:**

Yes

**28. Control type:**

Digital

# Technical data sheet

Technical parameters



## Freezing cabinet 700 l LED light, GN 2/1, stainless steel

<b>Model</b>	<b>SAP Code</b>	00012353
ENF 700 L	<b>A group of articles - web</b>	Refrigeration and freezer cabinets

**29. Door lock:**

Yes

**34. Maximum device temperature [°C]:**

-10

**30. Interior lighting:**

Yes

**35. Automatic defrost:**

Yes

**31. HACCP:**

Yes

**36. Number of grids:**

3

**32. Annual energy consumption [kWh]:**

2436

**37. Climate class:**

5

**33. Minimum device temperature [°C]:**

-24

**38. Cross-section of conductors CU [mm<sup>2</sup>]:**

0,5